

AT THE ROOT OF THE BEST SOIL HEALTH VARIETIES.



Grow to expect the best

Name: **ARCHITECT / VITARO**

Species: **WHITE MUSTARD**

End market: **BIOFUMIGATION/SOIL IMPROVEMENT**

SUMMARY:

ARCHITECT is a very late flowering variety of white mustard with good early vigour, allowing rapid ground cover. It is deep rooting and can reduce the incidence of beet cyst nematodes *Heterodera schachtii* and *H. betae* by 70-90%. It produces very high levels of glucosinolates and can help reduce *Rhizoctonia*.

VITARO is a late flowering variety of white mustard. It is a very leafy variety with good early vigour, which produces a deep tap root of up to 1.5m. It is fast growing, even at lower temperatures. Vitaro is frost-susceptible and easily incorporated into the soil.

Variety: RGT ARCHITECT

AGRONOMICS:

- Good early vigour and ground cover
- Very late flowering
- Good lodging resistance
- Good resistance to Alternaria

NEMATODE RESISTANCE:

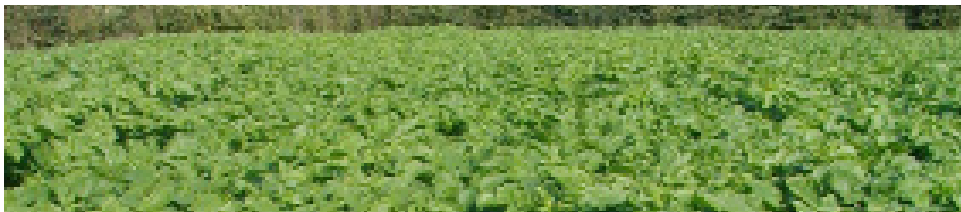
	Level of resistance	Non host
Heterodera schachtii Heterodera betae	Highly resistant	
Globodera rostochiensis		✓
Heterodera avenae Heterodera goettingiana		✓ ✓
Meloidogyne naasi		✓
Ditylenchus destructor		✓

SOWING RATES:

Sowing rates 20- 25kg

Rates should be adjusted accordingly depending on whether seed is drilled or broadcast.

Fertiliser Requirements: 30/60 kg N/Ha as necessary



Variety: RGT VITARO

AGRONOMICS:

- Good early vigour
- Late flowering
- Fast growing
- Easily incorporated

NEMATODE RESISTANCE:

	Level of resistance	Non host
Heterodera schachtii Heterodera betae	Highly resistant	
Globodera rostochiensis Globodera pallida		✓ ✓
Heterodera avenae Heterodera goettingiana		✓ ✓
Meloidogyne naasi		✓
Ditylenchus destructor		✓

SOWING RATES:

Sowing rates 20- 25kg

Rates should be adjusted accordingly depending on whether seed is drilled or broadcast.

Fertiliser Requirements: 30/60 kg N/Ha as necessary



Let's talk **01799 533700** • ragtseeds.co.uk

RAGT Seeds Ltd. Grange Road, Ickleton, Essex CB10 1TA.



Grow to expect the best